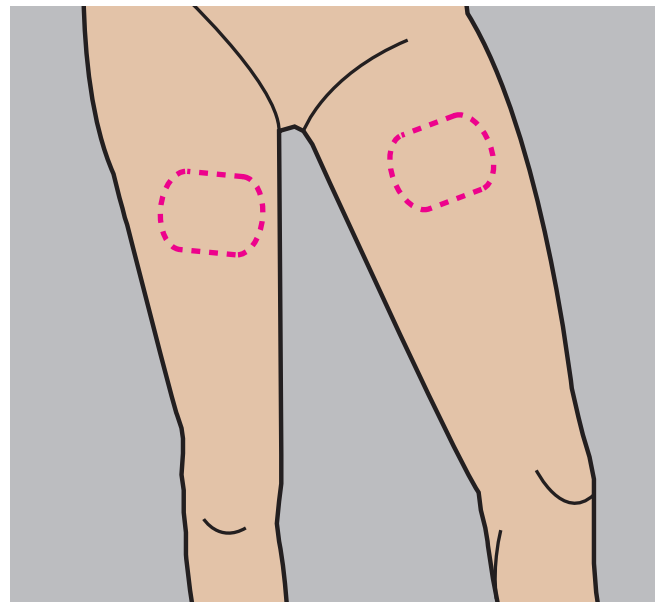
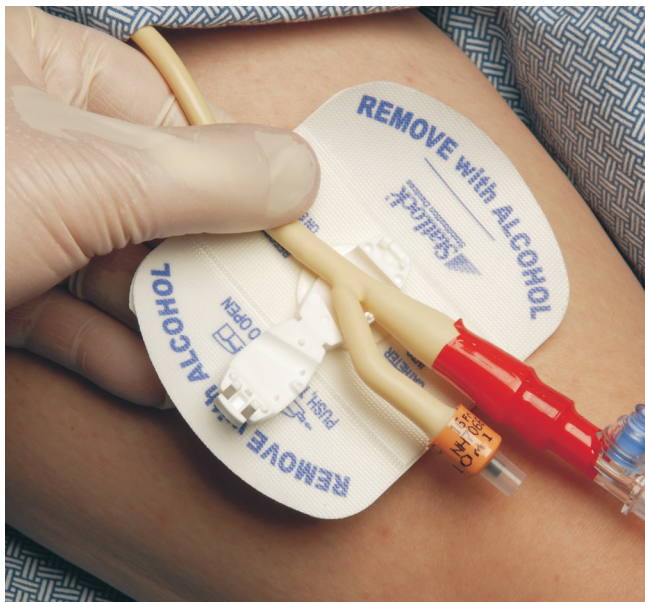


Safe and Secured

Secure indwelling urinary catheters to prevent urethral irritation¹

- Always use both skin prep pads provided in package. Prep must be dry before applying device.
- Always provide 1 inch of slack on the Foley catheter between the insertion site and the STATLOCK® Device and use the sheet clip on the tubing set to secure the drainage tube.



- Conduct routine skin assessments per protocol and remove if the patient experiences any fluid shifts that may interfere with skin integrity.
- Always remove STATLOCK® Device with 5-6 alcohol pads
- The STATLOCK® Device should be changed when clinically indicated at least every 7 days

The STATLOCK® Stabilization device should be monitored daily and replaced when clinically indicated, at least every 7 days. The catheter insertion site should be treated per local policy recommendations. The STATLOCK® device is contraindicated on patients with known tape and adhesive allergies. Alcohol and acetone may weaken the adhesive bond between the STATLOCK® device pad and the skin. Care should be taken when using these solutions while performing catheter site care. Please consult product inserts and labels for any indications, contraindications, hazards, warnings, cautions, and direction for use. For additional information on the STATLOCK® Foley Stabilization device, please call your local BARD® Representative. STATLOCK® devices are provided sterile.

1. United States of America. Department of Health and Human Services. Centers for Disease Control and Prevention. Guideline for Prevention of Catheter-Associated Urinary Tract Infections 2009. By Carolyn V. Gould, Craig A. Umscheid, et al. Healthcare Infection Control Practices Advisory Committee, 2009.