

## Administration of Medication

### ATTENTION: PROPER USAGE IS IMPORTANT

This poster provides a quick reference for the administration of medication through the DIGNISHIELD® Stool Management System. Consult product IFU for further information.

#### GATHER SUPPLIES



- Syringe of prescribed medication
- Empty water syringe
- Container of room temperature water
- Tube clamp (preattached to the piston valve hanger string)

#### POSITION PATIENT



- Position the patient according to your facility's protocol for rectal medication delivery

#### CLEAR IRRIGATION LINE



- Attach a Luer lock syringe to the clear irrigation ("IRRIG") port and flush the system with water

#### DELIVER MEDICATION



- Attach Luer lock syringe with prescribed medication to clear "IRRIG" port
- Elevate the drainage tubing to facilitate medication retention
- Infuse the prescribed amount of medication

#### CLEAR IRRIGATION LINE



- Attach water syringe to the clear "IRRIG" port
- Immediately flush the irrigation line with at least 10mL of water to ensure delivery of medication into the rectum

#### POSITION TUBE CLAMP



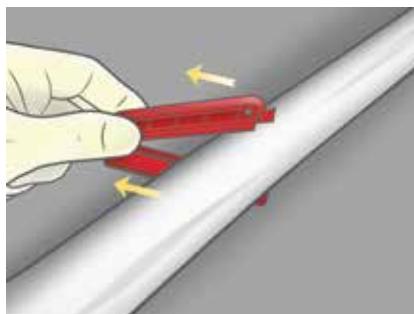
- Slide the tube clamp onto the drainage tube until the drainage tube contacts the hinge
- Position the tube clamp as close to the patient's buttocks as possible without the clamp touching the patient's skin

#### SECURE TUBE CLAMP



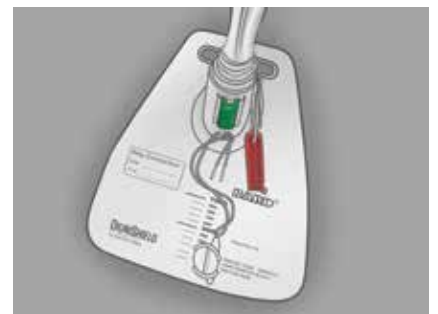
- Using two hands to facilitate ease of closure, place thumb on thumb to snap the tube clamp shut
- Ensure the patient does not lie on the tube clamp
- Dispose of syringes according to institutional policy

#### CLAMP REMOVAL



- After the prescribed dwell time, **remove the tube clamp**
- Verify unobstructed flow from the patient into the collection bag

#### CLAMP STORAGE



- Reattach the tube clamp to the piston valve hanger string for storage

#### TIPS:

- If the clamp is difficult to close or excessive leakage of medication is observed, reposition the tube clamp on the drainage tube.
- Some medication will reside between the clamp and the device opening.
- Elevation of the tube may be achieved by using a soft object, such as a pillow, placed under the tubing behind the patient's buttocks.
- The purple "FLUSH" port may be used to clear the drainage tubing after medication delivery.
- Ensure the patient is closely monitored and is not allowed to lie on the tube clamp.

The BARD® DIGNISHIELD® Stool Management System (SMS) with odor barrier properties is a single-use device intended for fecal management by diverting and collecting liquid or semi-liquid stool to minimize skin contact in adult, bedridden patients and to provide access for the administration of medications.

**Contraindications:** The device should not be used for more than 29 consecutive days, on patients with certain medical conditions including rectal or anal injury or abnormalities, on patients with rectal mucosa impairment or on patients who have had lower large bowel or rectal surgery within the last year. Do not use on patients with indwelling rectal or anal devices, delivery mechanisms, or enemas in place.

**Warnings and Adverse Events:** There is a potential risk of misconnections with connectors from other healthcare applications. As with the use of any rectal device, adverse events can occur including: leakage of stool, loss of anal sphincter muscle tone, pressure necrosis, infection, bowel obstruction, and perforation of the bowel. Changes to the patient including: rectal bleeding indicating possible pressure necrosis, abdominal distention, cuff migration, and rectal pain should be investigated.

Please consult package insert for more detailed safety information and instructions for use.