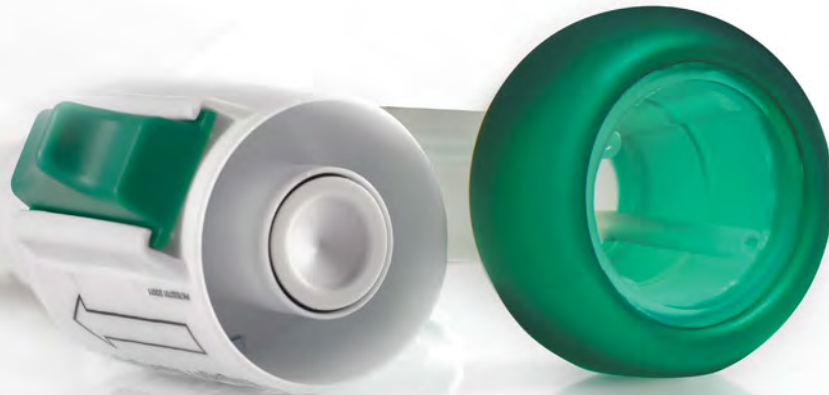




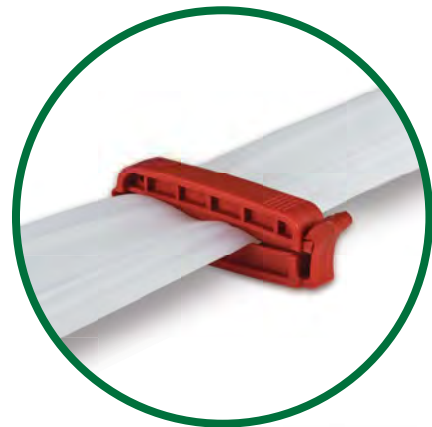
# DIGNISHIELD®

STOOL MANAGEMENT SYSTEM



## Protect What's Important

*with Medication Delivery*



## PROTECTING SKIN INTEGRITY is essential to patient health

### IMPROVED CONTAINMENT

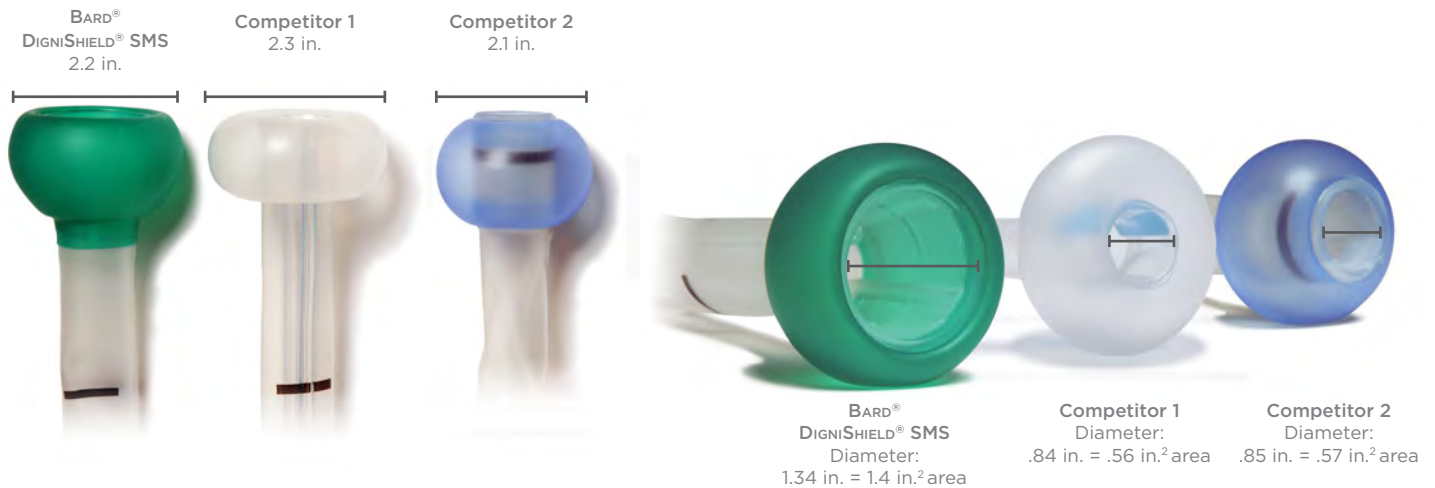
- Unique conical cuff **conforms to patient anatomy**, minimizing leakage



Cuff, Side view

### OPTIMIZED DRAINAGE

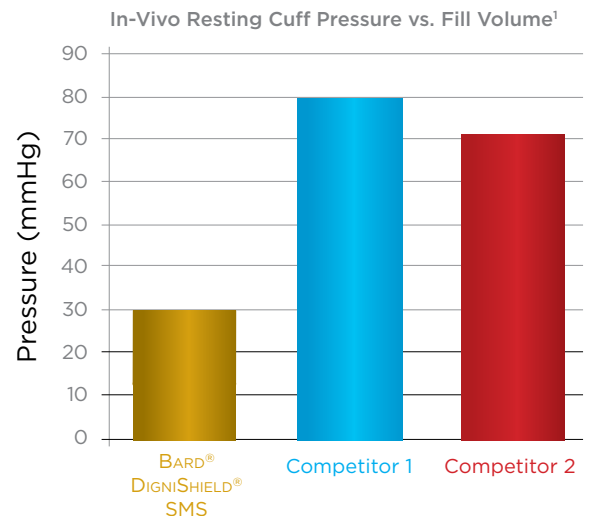
- With BARD® DIGNISHIELD® SMS's anatomical design, the geometric area at the opening of the cuff is 149% larger while maintaining an external cuff diameter comparable to other commercially available fecal management devices



### MINIMIZED PRESSURE

- Studies suggest that high pressure designs may impact capillary blood flow and cause mucosal tissue trauma<sup>1,2,3,4</sup>
- In simulated bench tests the BARD® DIGNISHIELD® SMS offers an average of 69% less resting pressure than other commercially available fecal management devices\*

In a randomized clinical study, retention cuff pressure was at least 2-fold lower for DIGNISHIELD® SMS than for the other devices.<sup>1</sup>



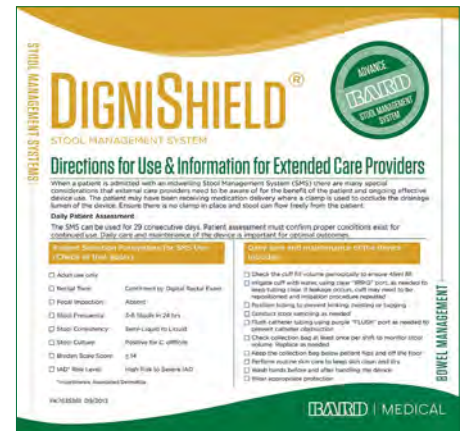
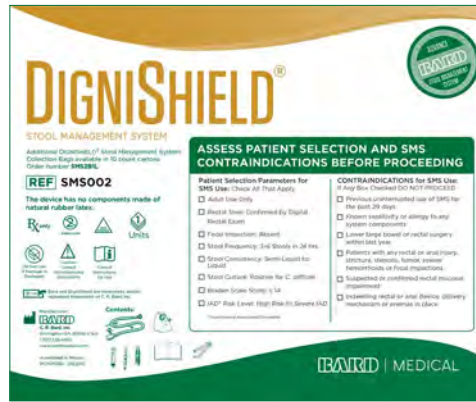
\*Bench data on file, may not correlate to clinical use

Average retention cuff pressure for subjects in three different positions and at three different elevation angles.

# THE DIGNISHIELD® STOOL MANAGEMENT SYSTEM: Advanced Technology. Advanced Protection.

## PRODUCT LABELING WITH A PURPOSE

- Labeling** reminds the clinician of the appropriate indication and use as well as the steps for proper insertion/removal technique and maintenance.
- Orange Chart Label:** Allows documentation of critical information such as confirmation of selection criteria and that no contraindications are present, as well as insertion date and time.
- Patient and Family Education Flyer:** Provides information about stool management systems, device care and when to contact a healthcare professional.
- Extended Care Providers Illustrative Flyer:** Provides information about patient selection criteria, daily care and maintenance as well as directions for use.



## MEDICATION DELIVERY

- Retention is important to facilitate delivery, minimize cleanup and reduce costly medication waste
- The BARD® DIGNISHIELD® SMS's unique, conical cuff design conforms to patient anatomy, minimizing leakage and facilitating medication retention

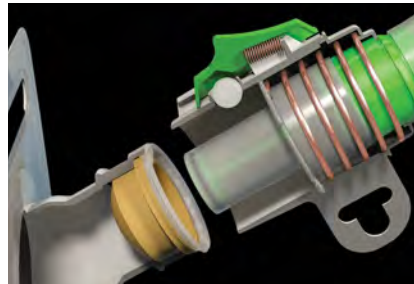
Brightly colored clamp stands out from the rest of the system and signals that medication delivery is in process



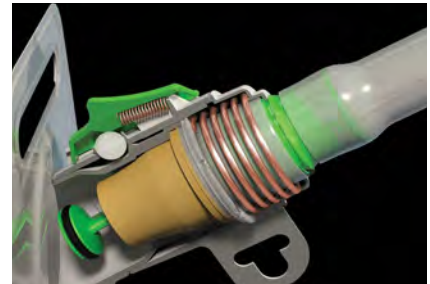
## PROTECTING AGAINST EXPOSURE means containing harmful microorganisms and reducing environmental contamination

### MINIMIZED EXPOSURE

- Unique self-closing mechanism reduces exposure to harmful microorganisms during bag changes



1. Disengaged



2. Engaged

### EFFECTIVE CONTAINMENT

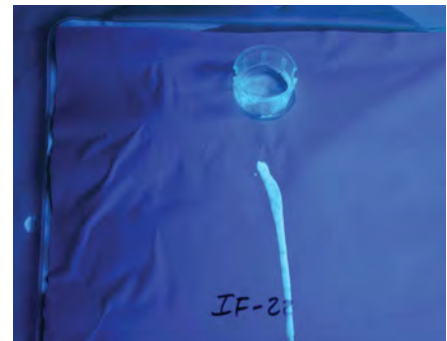
More effective in reducing contamination and minimizing leakage than the competitive alternatives<sup>5\*</sup>



BARD® DIGNISHIELD® SMS



Competitor 1

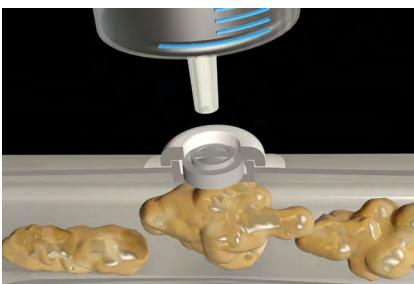


Competitor 2

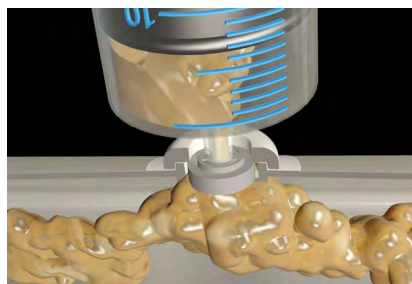
Note: Glowing areas on the bags are representative of average contamination observed after bag changes.<sup>5</sup>

Effective in containing *Clostridium difficile* (*C. diff*) organisms and minimizing environmental contamination<sup>6\*</sup>

\*Bench data on file, may not correlate to clinical use



1. Pre-sampling



2. Sampling in progress

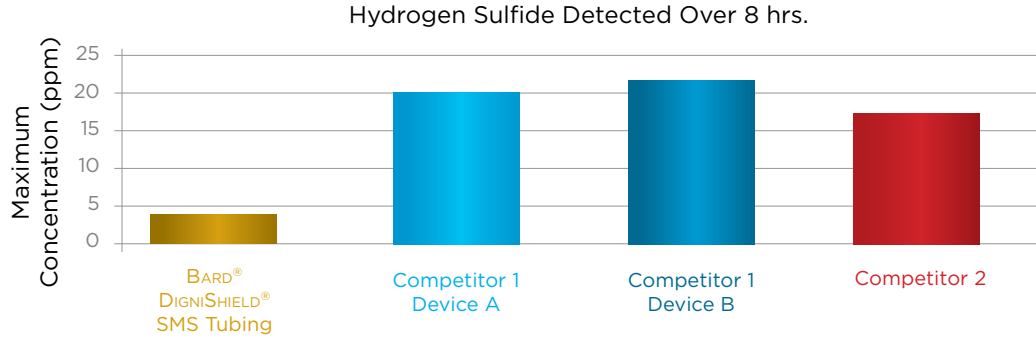
### RELIABLE SAMPLING

- Integrated, easy-to-use sampling port reduces the possibility of contamination when taking specimens

# PROTECTING PATIENT DIGNITY means minimizing cleanup and reducing odor

## ODOR CONTROL

- BARD's proprietary PERMALENE™ polymer technology significantly reduces tubing permeability of compounds that contribute to odor - **more than 76% when compared to silicone tubing.\***



\*Bench data on file, may not correlate to clinical use

**Reduce odor through technology.**

## PRODUCT DESIGN WITH A PURPOSE

**PERMALENE™ Polymer Technology**  
-Reduced odor mitigates contamination and increases patient dignity

**Sampling Port**  
-Intuitive operation and reduced contamination

**Self-Closing Connector**  
-Reduces exposure during bag changes

**Bowel Irrigation Port**  
-Provides irrigation at the end of cuff  
-Provides access for the administration of medication

**Catheter Flush Port**  
-Improves drainage and facilitates maintenance

**Low Pressure Conical Cuff**  
-Optimize drainage with larger drainage funnel  
-Minimize resting cuff pressure reduces potential for tissue trauma

**Tube Clamp**  
-Reduces leakage during medication delivery

**Cuff Inflation Port**  
-Green port corresponds with cuff color and specifies recommended inflation volume

**Self Closing Catheter & Bag**  
-Reduces exposure and provides quick cleanup

For more information about the DIGNISHIELD® Stool Management System and other BARD® products, please contact your sales representative or call 800.526.4455.

	DIGNISHIELD® Stool Management System	DIGNISHIELD® SMS Collection Bags
Product Code	SMS002	SMS2B1L
Case Quantity	2	10

#### References

1. Marchetti, et al. J Wound Ostomy Continen Nurs. 2011; 38(5):1-5
2. Loese, et al. Anest Analg 1979, 57:577-579
3. Seegobin RD, et al. Br Med J 1984, 288:965-968
4. Sparks, et al. Dis Colon Rectum 2010; 53: 346-349
5. Woodell. Minimizing Exposure to Contamination during Indwelling Fecal Drainage System Bag Changes through Closed-System Design, C.R. Bard Inc. 2012
6. Gloeckner. Containing the Spread of Clostridium difficile Through the Use of a Closed System Device, C.R. Bard Inc. 2013

**Indications:** The BARD® DIGNISHIELD® Stool Management System (SMS) with odor barrier properties is intended for fecal management by diverting and collecting liquid or semi-liquid stool in bedridden patients and to provide access for the administration of medications.

**Contraindications:** The device should not be used for more than 29 consecutive days, on patients with certain medical conditions including rectal or anal abnormalities, or on patients who have had lower large bowel or rectal surgery within the last year. Do not use on patients with indwelling rectal or anal device, delivery mechanisms, or enemas in place.

**Warnings and Adverse Events:** There is a potential risk of misconnections with connectors from other healthcare applications. As with the use of any rectal device, adverse events can occur including: leakage of stool, loss of anal sphincter muscle tone, pressure necrosis, infection, bowel obstruction, and perforation of the bowel. Changes to the patient including: rectal bleeding indicating possible pressure necrosis, abdominal distention, cuff migration, and rectal pain should be investigated.

Please consult package insert for more detailed safety information and instructions for use.



## BARD | MEDICAL

C. R. Bard, Inc.  
8195 Industrial Boulevard  
Covington, GA 30014  
1.800.526.4455  
www.bardmedical.com

Bard, DigniShield and Permalene are trademarks and/or registered trademarks of C. R. Bard, Inc.  
©2014 C. R. Bard, Inc. All Rights Reserved.  
1507-13 R08/15 THP P10/15 XM  
BMD/BOWL/0915/0001